



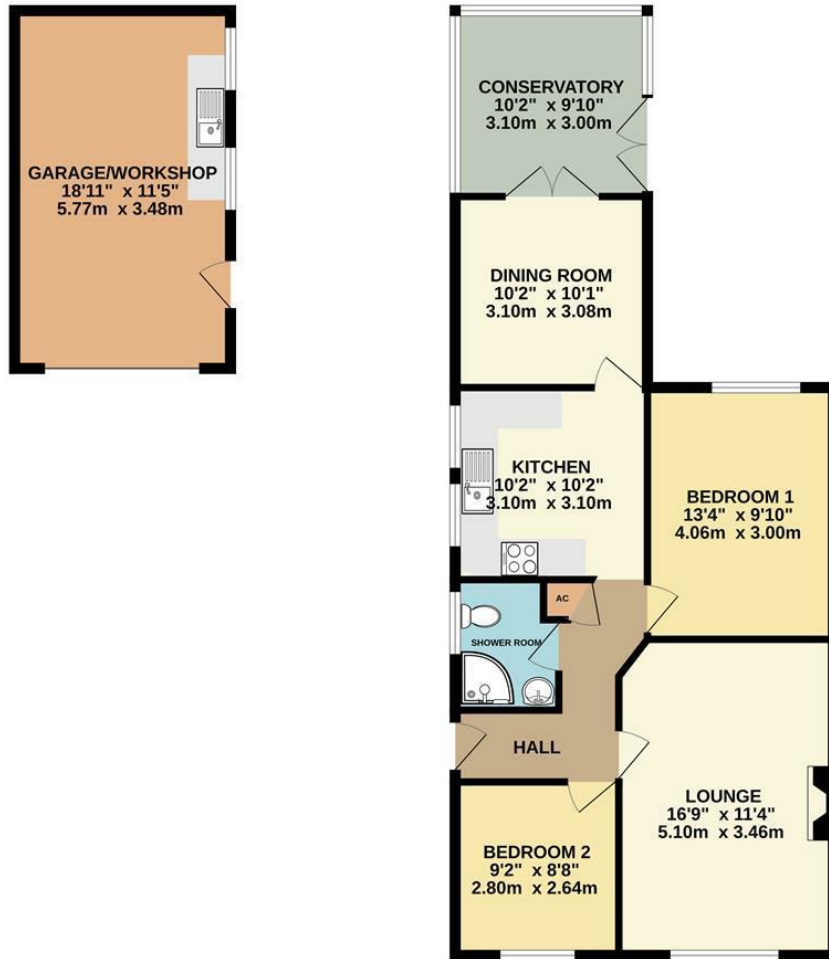
## **14 Shakespeare Drive, Kettering NN15 5QT Offers Over £270,000**

A superb two/three bedroom semi detached bungalow located in a very popular area in a quiet cul-de-sac. The property has been extended over the years and benefits from good size versatile accommodation that offers a hall, lounge, fitted kitchen, dining room/bedroom three, two bedrooms and shower room/wc. In addition there is a large garage/workshop, carport and driveway to the front and side. Private south facing rear garden with patio. benefits include gas central heating, double glazing and has recently been re decorated throughout with new carpets. Located for ease of access to local facilities to include shops and open countryside. Burton Latimer is well placed for access to the larger towns of Kettering and Wellingborough. Viewing recommended.

**Tenure: Freehold  
Energy Rating: D  
Council Tax Band: C**

**LUCAS**  
SALES & LETTINGS

GROUND FLOOR



- No Upward Chain
- Two/Three Bedrooms
- Extended Accommodation
- Conservatory
- Large Garage/Workshop And Carport
- Double Glazed
- Gas Central Heating
- Enclosed Rear garden
- Ample Off Road Parking
- New Carpets And Re-Decorated

Energy Efficiency Rating		
	Current	Potential
Very energy efficient - lower running costs		
(92 plus) <b>A</b>		
(81-91) <b>B</b>		
(69-80) <b>C</b>		
(55-68) <b>D</b>		
(39-54) <b>E</b>		
(21-38) <b>F</b>		
(1-20) <b>G</b>		
Not energy efficient - higher running costs		
	66	77
<b>England &amp; Wales</b>	EU Directive 2002/91/EC	



2 Silver Street, Kettering,  
Northamptonshire, NN16 0BN  
Tel: 01536 312 600

sales@lucasestateagents.co.uk

Important: We would like to inform prospective purchasers that these sales particulars have been prepared in good faith as a general guide only. A survey has not been carried out, nor the services, appliances and fittings tested. All measurements are approximate; sizes should not be relied upon for furnishing, or any other purposes. Floor plans are for guidance and illustration purposes only and are not to scale. Photos are taken with a wide angle lens. Items shown in the photographs are expressly excluded unless agreed otherwise in writing. If there are any matters likely to affect your decision to buy, please contact us before viewing the property and clarify all matters prior to offer. L786

**LUCAS**  
SALES & LETTINGS